

ADSL2+ Router



A2R41/T

- ❖ Integrated 4 port 10/100Mbps switch
 - ❖ ITU-T G.992.1 (Annex A and Annex B / ETSI / U-R2)
 - ❖ ITU-T G.992.3 G.992.4 G.922.5 (ADSL2 / ADSL2+)
-

Features

- ANSI T1.413 Issue 2, ITU-T G.992.1(G.dmt) and G.992.2 (G.lite) compliant for Annex A, B, ITU-T G.992.3, G.992.4 for ADSL2, ITU-T G.992.5 for ADSL2+
- Downstream and upstream data rates up to 24Mbps and 2Mbps
- Configuration and management operated via WWW browser with password protected access
- Firmware upgrade via Web console
- All Ethernet ports support auto-crossover (MDI/MDI-X) - No need for crossover cables
- Compliant with IEEE 802.3 and IEEE 802.3u 10/100 Mbps
- Share your ADSL2+ Internet access on your powerline and Ethernet Networks
- DMZ and Virtual Server function provided operating modes include routing, bridge, static IP, PPPoE, PPPoA etc

ADSL2+ Router

Specifications

ADSL Features

- Supports DMT modulation and demodulation
- Support ITU-T G.992.1 G.992.3, G.992.4, G.992.5 Annex A & T1.413 Issue 2 for Annex A, B
- ETSI TS 101 388 / DTS TM-06006 for Annex B
- Supports ITU-T G.992.1 (G.dmt) Annex B – Deutsch Telecom / U-R2 for Annex B (U-R2)
- G.992.1 (G.dmt) : Downstream and upstream data rates up to 8Mbps and 1Mbps
- G.992.2 (G.Lite) : Downstream and upstream data rates up to 1.5Mbps and 512Kbps
- G.992.3 / G.992.4 (ADSL2) / G.992.5 (ADSL2+) downstream and upstream data rates up to 24Mbps and 2Mbps

ATM Features

- WAN Mode Support : PPP Over ATM (RFC2364) and PPP Over Ethernet (RFC2516)
- LAN Mode Support : Routed / Bridge Ethernet Over ATM (RFC-2684)
- Classical Internet Protocol Over ATM (RFC-1577)
- CBR / UBR / UBR with PCR Shaping / VBR-rt / VBR-nrt
- Supports 8 ATM VCs

Management Features

- Firmware upgrade via Web console
- Customize Web pages
- WAN and LAN side connection statistics
- Configuration of static routes and routing table
- Configuration of NAT / NAPT
- Password protected access
- Selection of Bridge or Router Mode
- PPP user ID and password
- Configuration of VCs (Virtual Circuits)

Physical Interfaces

- ADSL Modem / Router with four RJ-45 (10/100 Base-T) Ethernet port & an ADSL port
- ADSL Status, Power and switching hub LED indicators

Bridge Mode

- Ethernet to ADSL self-learning Transparent Bridging (IEEE 802.1D)

Router Features

- DHCP Server and Client
- NAPT (Network Address and Port Translation)
- NAT (Network Address Translation)
- ICMP (Internet Control Message Protocol)
- DDNS (Dynamic Domain Name Service)

Security Features

- Password protected configuration access
- User authentication (PAP / CHAP) with PPP

Ethernet Features

- Compliant with IEEE 802.3 and 802.3u 10/100 Mbps
- All Ethernet ports support auto-crossover (MDI/MDI-X)

Temperature

- 32~122°F (0 ~50°C)

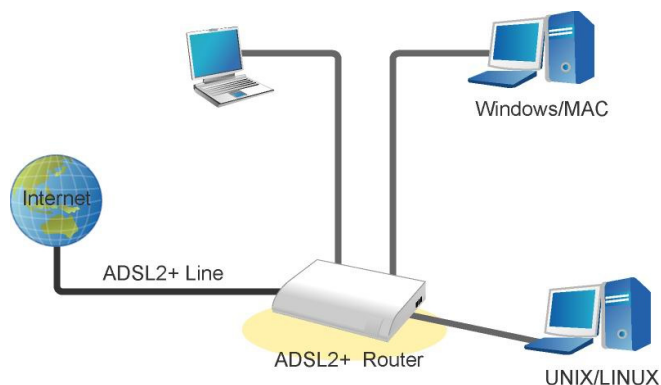
Humidity

- Max. 95% (Non-Condensing)

Regulatory Approvals

- FCC, CE

Application:



FCC CE

ACEEX

2F, NO.2, ALLEY 1, SZE-WEI LANE, CHUNG-CHENG RD., HSINTIEN, TAIPEI 23138, TAIWAN, R.O.C.

TEL: 886-2-22185357 FAX: 886-2-22186329
http://www.aceex.com Mail: sales@aceex.com